

44/124

# REPLAT PARCELS A & B OPEN DOOR ESTATES OF VIA VERDE P.U.D.

P.B. 33, PGS. 101 & 102  
IN PART OF SECTION 22, TWP. 47 S., RGE. 42 E.  
PALM BEACH COUNTY, FLORIDA  
IN 2 SHEETS SHEET NO. 2

MICHAEL G. PURMORT & ASSOCIATES, INC.  
LAND SURVEYORS & PLANNERS  
DEERFIELD BEACH, FLORIDA

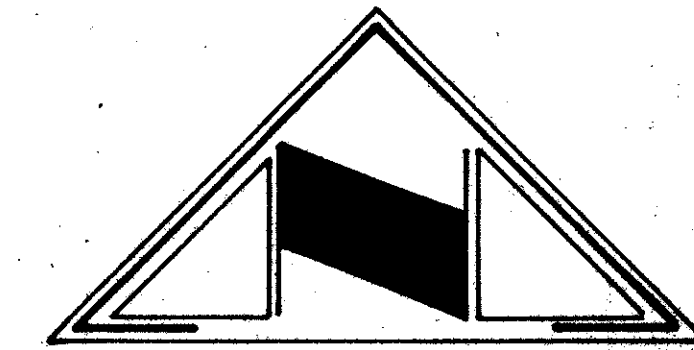
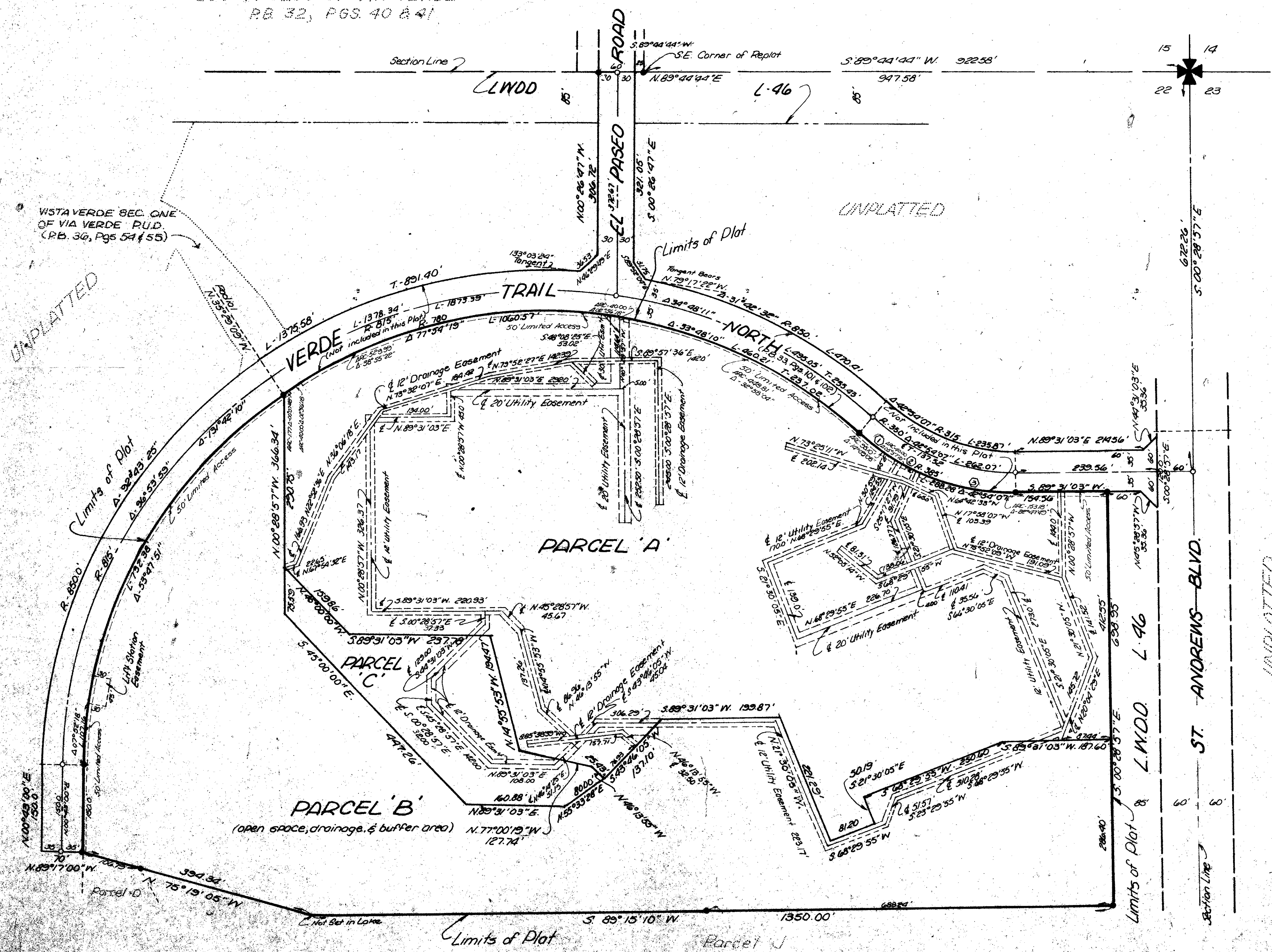
APRIL 1982  
SCALE IN FEET SCALE: 1" = 100'

PARCELS 23a26 VIA VERDE P.U.D.

# 124

STATE OF FLORIDA  
COUNTY OF PALM BEACH ss  
This Plat was filed for record at \_\_\_\_\_  
this \_\_\_\_\_ day of \_\_\_\_\_, 1982  
and duly recorded in Plat Book No. \_\_\_\_\_  
on page \_\_\_\_\_  
JOHN B. DUNKLE, Clerk Circuit Court  
BY \_\_\_\_\_, DC.

REPLAT OF  
LOS PASEOS OF VIA VERDE  
P.B. 32, PGS. 40 & 41



**CURVE DATA**

①	R = 385'	R = 385'	R = 385'
②	A = 11°23'25"	A = 05°42'16"	A = 25°46'24"
③	L = 76.76'	L = 38.55'	L = 173.18'
④	T = 38.51'	T = 19.18'	T = 88.08'

### NOTES

- All bearings shown hereon are relative to an assumed meridian used throughout Boca West and Via Verde.
- Building Setback Lines shall be as required by Palm Beach County Zoning Regulations.
- There shall be no buildings or other structures placed on Utility Easements.
- There shall be no buildings or any kind of construction or trees or shrubs placed on Drainage Easements.
- denotes Permanent Reference Monument
- denotes Permanent Control Point
- Where Utility Easements and Drainage Easements cross, Drainage Easements shall take precedent.
- Utility Easements cover all Tracts shown hereon for Private Road Purposes.
- Approval of landscaping on Utility Easements other than water and sewer shall be only with the approval of all Utilities occupying same.

39

0323-301

22-47-42

## OPEN DOOR EST. REPLAT PARCEL A+B F.S.36

44/124